



# CATALOGUE 2024

**CREST**  
DUTCH MACHINERY





# DRIVING SUPERIOR LAMINATION

## WELCOME TO CREST

### THE COMPANY

Boasting over four decades of industry-leading expertise, Crest Dutch Machinery stands as the paragon of trust in the lamination sector. We masterfully engineer and deliver advanced industrial laminators, catering to an array of applications, processes, and industries. Our solutions are fortified by the collective knowledge and skill of our seasoned in-house engineering team, ensuring our offering is not only top-tier, but continually evolving to meet the shifting needs of the industry.



### THE PROMISE

Creativity and technical knowhow lead to superior lamination solutions. Solutions for your demands. We are proud to produce and commission, in close consultation with the customer and entirely according to your wishes, high-quality and technologically state of the art laminating machines, including all relevant peripheral equipment. We do this with a team of people who, with their strong passion for technology, have the ambition to serve you as our customer optimally. The excitement begins when we start designing your solution. We are experts in the development and production of complete laminating solutions. Our mission is to be a reliable, open and honest partner. We strive for sustainable relationships with strategic suppliers and other stakeholders. Our processes are in accordance with ISO 9001.

### PARTNERS

We are well connected in the industry and are a member of a number of organizations to keep track of technological developments, guidelines and other matters keeping us a leader in the market.





# MACHINES

## Laminating

|                              |         |
|------------------------------|---------|
| - ES-1600                    | page 04 |
| - TS-1600/2100               | page 04 |
| - BL-2500                    | page 04 |
| - Liquid Silicone Laminator  | page 05 |
| - Large Nip Laminator        | page 05 |
| - Laboratory Laminator       | page 05 |
| - Glass Laminator            | page 06 |
| - Automated Sheet Laminator  | page 06 |
| - Laminator Fly Cutter       | page 06 |
| - Laminator Slitter Winder   | page 07 |
| - Laminator Slitter          | page 07 |
| - R2R Laminator Slitter      | page 07 |
| - Inline Laminator           | page 08 |
| - Cross Cut Laminator        | page 08 |
| - Medical Laminator          | page 08 |
| - De-Laminator               | page 09 |
| - Mirror Laminator           | page 09 |
| - Glass Protection Laminator | page 09 |
| - Flatbed Laminator          | page 10 |
| - Inline Laminator           | page 11 |
| - Cross Cut Laminator        | page 11 |
| - Medical Laminator          | page 11 |
| - Verical Laminator          | page 12 |
| - Full-Auto Sheet Laminator  | page 12 |
| - Flexible Panel Laminator   | page 12 |

## Cutting

|                           |         |
|---------------------------|---------|
| - Rotary Die Cutter       | page 13 |
| - Roll Sheet Cutter       | page 13 |
| - Multi Wall Cutter       | page 13 |
| - Slitting Cross Cutter   | page 14 |
| - Heavy Duty Board Cutter | page 14 |
| - R2R Perforator Cutter   | page 14 |

## Winding

|                               |         |
|-------------------------------|---------|
| - Jumbo Roll (un)Winder       | page 15 |
| - Heavy Duty (un)Winder       | page 15 |
| - Coreless Winder             | page 15 |
| - Motorized Roll Feeder       | page 16 |
| - Take Up Unit                | page 16 |
| - Auto Splicing Turret Winder | page 16 |

## Others

|                        |         |
|------------------------|---------|
| - Roll Loader          | page 17 |
| - Web Embosser         | page 17 |
| - Hot Stamping Machine | page 17 |

## License Plate Production Line

|                                 |         |
|---------------------------------|---------|
| - Hologram Laser Marking Unit   | page 18 |
| - Automatic Stretch Laminator   | page 18 |
| - License Plate Production Line | page 18 |

**ALL OUR MACHINES CAN BE CUSTOMIZED  
AND PROVIDED WITH PERIPHERALS**



# LAMINATING machines

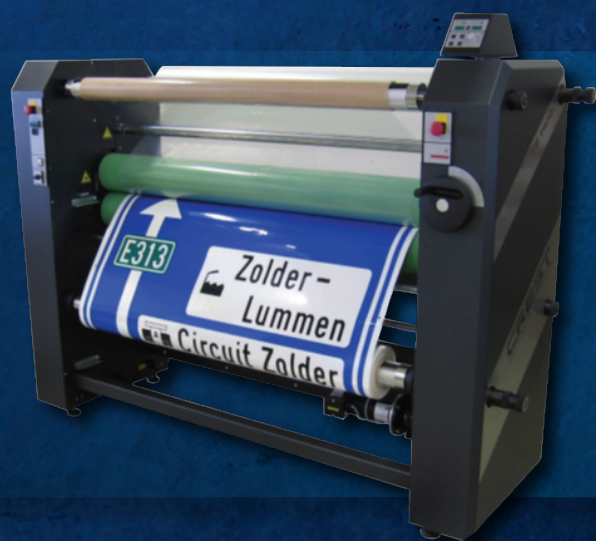
## ES-1600

The versatile ES-1600 laminator is designed for high-quality laminations, panel mounting of images, and print encapsulation. It offers adjustable temperature and speed settings, making it easy to achieve the desired results. The machine includes user-friendly features like a rotatable control panel and a foot pedal for start/stop. Available in both 2-roller and 4-roller versions, the ES-1600 ensures seamless finishes and can be customized to meet specific needs.



## TS-1600/2100

The TS-1600/2100 is a top-tier laminating machine renowned for its high-pressure capabilities and specially selected rubber compound rollers. This unique combination ensures flawless lamination, even with the most challenging films, eliminating silvering and maintaining exceptional quality and contrast. Widely used for traffic signs, the TS-1600/2100 is also perfect for any application demanding the highest standards of quality. Focus on precision and performance by using this quality machine.



## BL-2500

Introducing the BL-2500, a robust heavy-duty laminator with an impressive 2500mm working width. Its reinforced frame and high-quality components ensure precision without compromising on size. With easy-to-use controls and versatile features like double-sided laminating and removable tables, the BL2500 delivers top-notch performance and reliability for all your laminating needs.





# LAMINATING machines

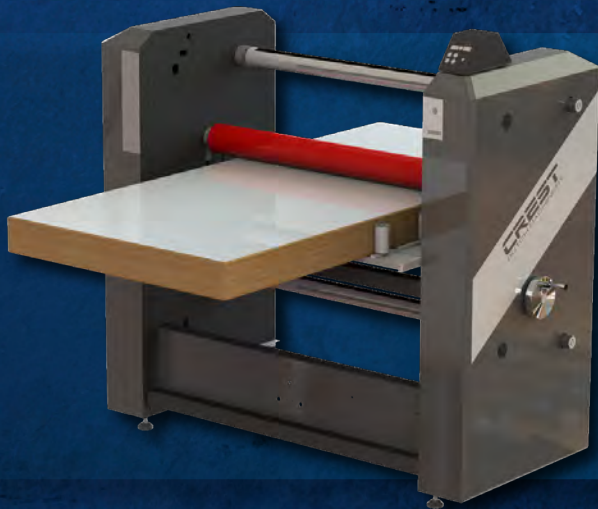
## LIQUID SILICONE LAMINATOR

Our Liquid Silicone laminator is designed for precise face mounting, bonding prints to acrylic or glass with optically clear silicone adhesive. This process enhances the visual quality of the image, providing a smooth, durable finish. Ideal for galleries, commercial displays, and art presentations, our laminator ensures a professional, bubble-free result. Reliable and efficient, it delivers consistent, high-quality outcomes for all your lamination needs.



## LARGE NIP LAMINATOR

The user-friendly Flat Door Laminator has been developed for professional and industrial applications in all areas involved in the production, manufacturing and processing of doors and panels of all kinds up to 130mm in thickness! The proven technology with dry laminating of double-sided adhesive foils that comes off the roll does the job perfectly and in the shortest possible time. It can laminate panels on either one side or both sides simultaneously, offering flexibility to meet diverse production needs.



## LABORATORY LAMINATOR

The Laboratory Laminator is a versatile machine ideal for both pilot production and regular manufacturing work. With its external and internal heating sources, adjustable high lamination pressure, and large roll opening, it can handle a wide range of materials with varying parameters. This flexibility makes it perfect for experimenting with new products as well as scaling up for full production runs. The machine's advanced features ensure consistent, high-quality results, making it an essential tool for any production environment.





# LAMINATING machines

## GLASS LAMINATOR

The Crest Glass Panel Laminator is a versatile machine designed for efficient glass lamination. It can handle both double-sided and single-sided lamination, applying a protective film with precision. The machine features an automatic cross-cutting system that separates the laminated glass sheets after processing, streamlining production. With its adjustable speed settings and user-friendly Human-Machine Interface (HMI), operators can easily control the lamination process. The laminator also includes safety features and is designed for easy integration and maintenance within production lines.



## AUTOMATED SHEET LAMINATOR



The Crest Sheet Laminator is an advanced machine designed to laminate films onto various materials, such as paper and plastics. It stands out due to its fully automated features, including a pick-and-place unit, adjustable feeder, and a user-friendly touch screen interface. The machine is adaptable to different production needs, offering customization options to suit specific requirements, making it a versatile tool for high-quality laminating tasks.

## LAMINATOR FLY CUTTER

The Crest Laminator Fly Cutter is expertly designed for both hot and cold lamination, suitable for single or double-sided application on various sheets. This machine features a smart on-the-fly cutting module that automatically separates laminated sheets, ensuring continuous production without the need of interrupting the process. It excels with both soft and hard materials, offering high-speed processing and the flexibility to handle sheet-to-sheet and roll-to-sheet operations.

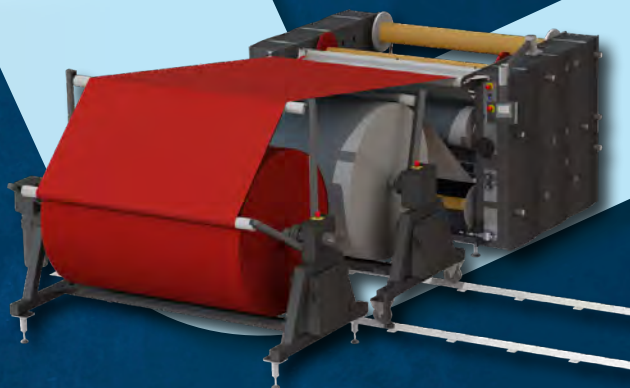




# LAMINATING machines

## LAMINATOR SLITTER WINDER

The Crest Winder Slitter Laminator is designed for laminating foam onto a polyester base and then slitting the material. It can produce both wide rolls and multiple narrow rolls as the final product, thanks to its multiple slitting knives. This capability allows for tailored production to meet specific needs. The machine also features dual laminating roller sets and a smart PLC system, ensuring user-friendly operation and high efficiency. Its flexibility in producing different roll widths makes it a versatile and customizable tool for various material processing tasks.



## LAMINATOR SLITTER

The Crest Laminator Slitter laminates adhesives and films onto rubber and foam materials, slits them to desired widths, and is specialized for unwinding and rewinding jumbo rolls with automatically controlled winding tensions and speeds. It features a rotary carousel for quick material switching, a lifting system for safe roll changes, and a dual laminating process with adjustable heating. The machine's precise slitting capabilities, automatic material alignment, and customizable settings ensure high-quality output for diverse production needs.

## R2R LAMINATOR SLITTER

The Crest R2R Laminator Slitter is a specialized machine designed for laminating and slitting printed PET plastic onto self-adhesive PE foam or thin PVC. It features adjustable laminating rollers, heatable up to high temperatures, and a pneumatic shear-cut slitting system for cutting the toughest materials. The machine stands out due to its automated web tension regulation, precise slitting capabilities, and user-friendly HMI controls, making it ideal for high-quality, precise roll-to-roll lamination and slitting processes in industrial settings.

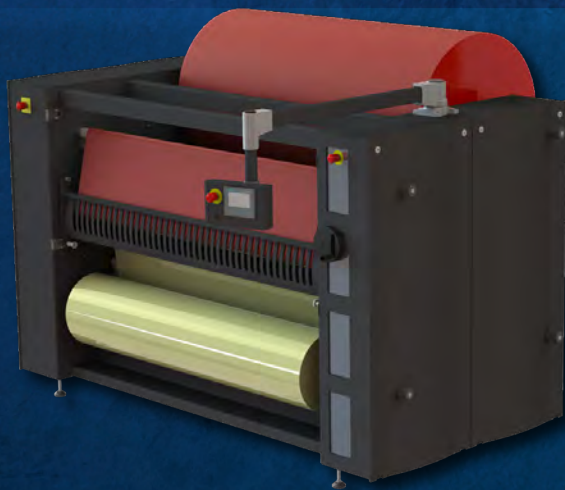




# LAMINATING machines

## INLINE LAMINATOR

The Inline Laminator by Crest is an advanced machine designed for seamless integration into continuous production lines. It laminates materials on one or both sides with precision, ensuring uninterrupted 24/7 operation thanks to its four-cassette system. As one cassette depletes, another automatically takes over, minimizing downtime. The machine emphasizes efficiency, sustainability, and ease of use with features like operator visibility and precise heat application, making it ideal for high-volume manufacturing environments.



## CROSS CUT LAMINATOR

This laminator with cross-cutting system is a specialized machine designed for applying self-adhesive layers to different foam materials in a roll-to-roll process. It features integrated lamination and cross-cutting functionalities, allowing for precise material handling and processing. The machine's dual winding positions, equipped with Autogrip axes, facilitate seamless material winding and unwinding. Its advanced Siemens PLC control system with a touchscreen interface ensures efficient operation. This machine is notable for its high precision, reliability, and user-friendly interface, making it ideal for industrial lamination processes.

## MEDICAL LAMINATOR

Next-Gen Medical Laminator: Streamlined Production for Vaccine Enclosures. Crafted for high-demanding cleanroom operations and fully FDA-approved, our laminator efficiently handles the challenges of processing semi-vulcanized rubber, guaranteeing seamless lamination and cutting for top-tier vaccine enclosure production.





# LAMINATING machines

## DE-LAMINATOR

The Full-automatic De-laminator excels in high-volume production, automating the separation of protective films from plastic sheets with minimal manual input. It features automated feeding, precise positioning via a vacuum conveyor, and a tape applicator followed by a separation knife. Post-delamination, sheets are cleaned with ionized air and a cleaning roller for flawless results. Capable of handling over a thousand sheets daily, this machine enhances efficiency and maintains quality with integrated workflow automation.



## MIRROR LAMINATOR LINE

The Crest Mirror Laminator specializes in adhesive lamination for spherical shapes, making it unique in its field. Its advanced precision laminating rollers and high-precision laser technology ensure flawless application on curved and spherical surfaces, which are particularly challenging to handle. This capability is crucial for industries requiring perfect alignment and adhesion on non-flat surfaces, such as in the production of specialized optics or automotive components. The machine's cleanroom compatibility and efficient waste management further enhance its value.



## GLASS PROTECTION LAMINATOR

The Crest Glass Protection Laminator, specifically designed for automotive use, applies protective foil to curved glass with precision. Our expertise ensures flawless lamination without air entrapments or creases, using best-quality components and advanced servo-driven web tension control. The fully automated machine can handle various glass variants, and its Pick & Place unit ensures exact alignment. Automation and minimal downtime make it user-friendly for operators, solidifying our leadership in advanced lamination technology.

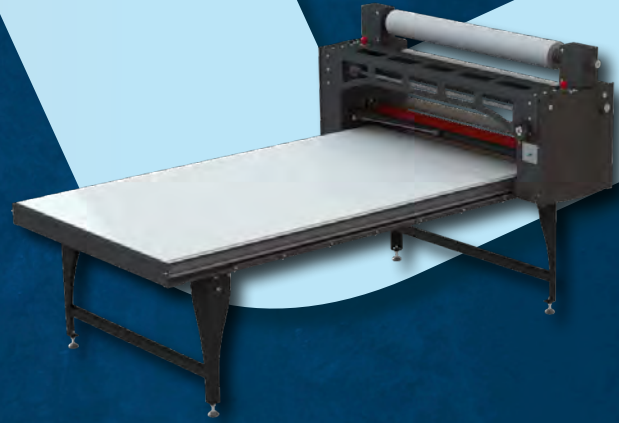




# LAMINATING machines

## FLATBED LAMINATOR

The Flatbed Laminator is designed for applying adhesive onto PET pinching plates. This machine features an automated laminating module that moves over a flatbed, ensuring precise adhesive application. Key features include adjustable laminating speed, a manual adhesive cutting provision, and height adjustment for varying plate thicknesses. Its unique design, with two unwind positions and manual slit knife, offers flexibility and precision. The machine is equipped with essential safety features like emergency stops, making it both efficient and secure for industrial use.

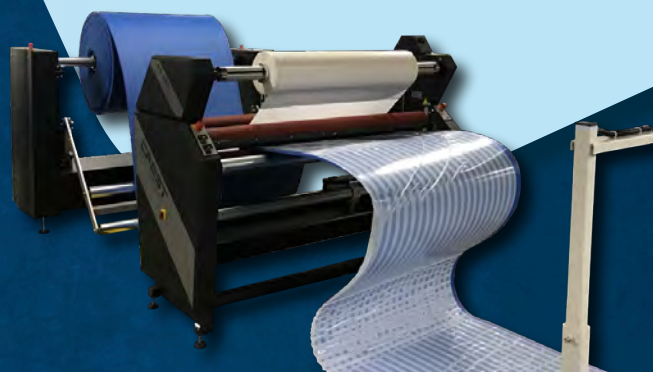




# LAMINATING machines

## LAMINATOR DE-CURLER

Specially designed to straighten materials that have developed a natural curve or bend due to being stored in rolls, especially different foam materials. These materials often need to be flattened before they can be further processed or laminated in order to achieve proper lamination results. The machine not only flattens these curved materials but also laminates them with film or tape in a single, efficient operation. This capability ensures a smooth and flat final product, which is crucial for applications like printing, packaging, or adhesive-backed materials. This machine is installed inline



## MULTIPLE STRIP LAMINATOR

This is a specialized machine designed for automating the process of applying adhesive tape, fiber tape, and labels to foam materials. It integrates multiple production steps, such as double-sided lamination and precise cutting, into a single, streamlined operation. This machine is notable for its ability to handle various product configurations with high precision, supported by customizable settings and a user-friendly touchscreen interface, making it an efficient tool for manufacturing specific foam-based products.



## FACE MASK LAMINATOR

Designed for the efficient production of face masks, this machine unwinds, laminates, and buffers materials, preparing them for further processing in the production line. The machine is equipped with pneumatic clamps for material handling and a sophisticated lamination station with temperature control. Its modular design allows for the seamless integration of various materials. What makes it special is its precision, modularity, and ability to handle multiple layers of material simultaneously, ensuring high-quality production standards.





# LAMINATING machines

## VERTICAL LAMINATOR

The Vertical Laminator is a groundbreaking machine specifically designed for the vertical application of self-adhesive foil on the hulls of large industrial vessels, a capability that sets it apart from other machines in the industry. This feature makes it especially suited for laminating at the waterline of ships, where precision and adhesion on curved, vertical surfaces are crucial. Its advanced design, including precise laminating rollers, heating units, and a kiss-cutting system, ensures flawless application even on complex, curved vertical surfaces.



## FULL-AUTO SHEET LAMINATOR

The Full-Auto Sheet Laminator automates the process of applying protective film to sheets. This machine efficiently handles material alignment and lamination using advanced pick and place units that precisely position sheets and film. The process begins by loading sheets on the infeed table and a film roll onto the designated unwind position. The film is then unwound, cut to the required size, and aligned on a vacuum conveyor. The pick and place units position the sheets and film for lamination, ensuring accurate alignment. Once laminated, the sheets are automatically transported and stacked for collection, optimizing production efficiency without the need for additional lifting equipment.



## FLEXIBLE PANEL LAMINATOR

The Flexible Display Laminator by Crest is a specialized machine which takes part in the production of rollable screens used in e-readers and smartphones. It features a fully automated process in a clean room environment, ensuring precision and minimal contamination. The machine uses a robotic arm, vacuum beds, laminating rollers, and laser cutters to laminate flexible displays with printed electronics. It also integrates safety features like sensors and electronic locks to maintain operator safety and process integrity. This machine is vital for advancing flexible display technology.

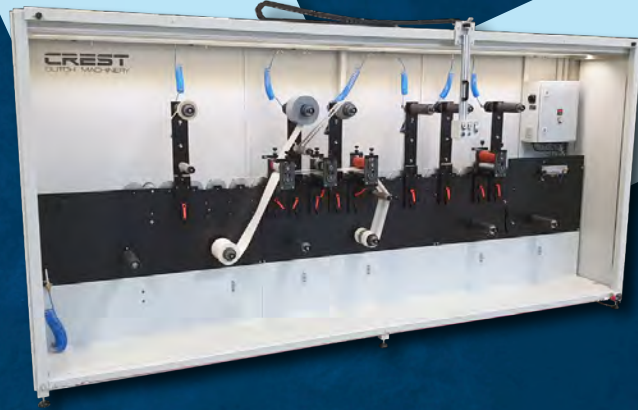




# CUTTING machines

## ROTARY DIE CUTTER

The Crest Rotary Die Cutter excels in a range of winding, laminating, and cutting techniques, suitable for various materials including plastic, paper, foam, rubber, foil, and adhesives. It features a modular system with interchangeable units such as Wind & Unwind units, Laminating unit, Stacker, and Die-cut. Its open construction facilitates easy setup, while its capability to completely close prevents dust intrusion, ensuring smooth and efficient production runs.



## ROLL SHEET CUTTER

The Roll Sheet Cutter is expertly crafted for the Sign and Converting industries, handling an extremely wide range of materials, transforming rolls into precise sheets. It boasts four air-controlled cold crush-slitting knives and a shear cross-cutting system, with optional hot slitting and hot crosscutting capabilities. The machine includes a skew function for fine-tuning the alignment of the cross-cutting line and features a rotation selection unwind, ensuring exceptional accuracy and versatility for diverse cutting applications.



## MULTI WALL CUTTER

The Multiwall Cutter is a specialized machine that cuts, rather than saws, polycarbonate multiwall panels. This cutting method ensures clean edges without burrs, providing a superior finish compared to traditional sawing. Additionally, the production environment remains clean and free from debris or dust, making it safer and more efficient. The machine combines precision, safety, cleanliness and robustness, making it ideal for industrial applications where high-quality cuts and a tidy workspace are essential.





# CUTTING machines

## SLITTING CROSS-CUTTER

This is a machine designed for the efficient processing of different kinds of material. It unwinds large rolls of material, slits them into smaller strips, and rewinds these strips onto new rolls. This machine is particularly notable for its precision, handling materials with high accuracy, and its ability to adjust to different material types and thicknesses. A special winding shaft is integrated in the design of the machine to guarantee perfect winding of all rolls. Its safety features and user-friendly interface make it suitable for industrial environments, ensuring both high productivity and safety for operators.



## HEAVY DUTY BOARD CUTTER

The Heavy Duty Board Cutter is a versatile machine designed for fast, accurate, and clean cutting of tough materials without generating dust, noise, or fumes. It can operate both horizontally and vertically, making it adaptable to different workspace requirements. The machine is powered by a robust motor and features a fast pneumatic clamping bar, ensuring efficient production cycles. Its precision and ability to handle a variety of materials make it a standout choice for high-quality cutting tasks.

## R2R PERFORATOR CUTTER

This converting machine is designed to cut or perforate foil into specific sizes, either as sheets or re-rolled foil. It uses an HMI panel for precise control and can automatically stop when a preset quantity is reached or the foil roll ends. What makes this machine special is that it is equipped with a flatbed die, allowing for easy cutting or perforating of various patterns. Additionally, the machine is versatile and comes with multiple safety features.





# WINDING machines

## JUMBO ROLL (un)WINDER

The Jumbo Roll Winder is designed to optimize media handling with features like auto-tensioning, adjustable speed, and selectable winding direction. It efficiently winds rolls to perfection, accommodating various roll widths and weights. Its advanced autotensioning system ensures consistent quality, while the easy-to-use auto-grip shaft simplifies loading and unloading. The machine's versatility and customizable options make it ideal for enhancing productivity in media processing environments.



## HEAVY DUTY (un)WINDER

The Heavy Duty Winder is engineered for efficient handling, winding, and unwinding of large and heavy rolls of various materials such as foils, films, and textiles. Its robust frame, combined with a stable metal structure and advanced mobility features, ensures easy maneuverability. Equipped with safety chucks, pneumatic clamping shafts, and a diameter sensor for precise winding control, this machine is designed to handle high torques and weights with exceptional stability and performance. Customizable for different material sizes, it's built for reliable and efficient operation.



## CORELESS WINDER

An innovative machine that efficiently winds rubber (and other) materials without the need for a core, reducing material waste and improving sustainability. It features a precise winding system with advanced automation, including buffer and crosscutting units, ensuring smooth, consistent, and high-quality rolls. The machine's design, with anti-stick and high-friction rollers, allows it to handle sticky or delicate materials with ease. Its semi-automatic packaging process further streamlines production, making it highly customizable and ideal for various industrial applications.

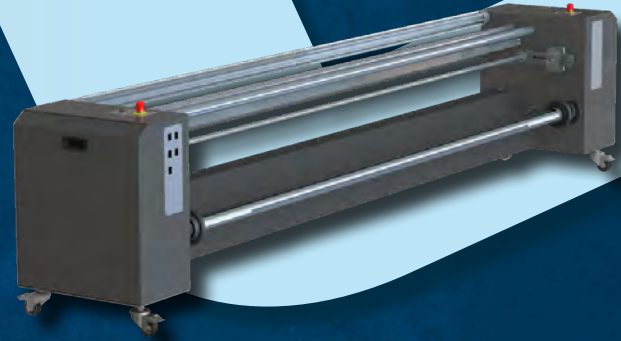




# WINDING machines

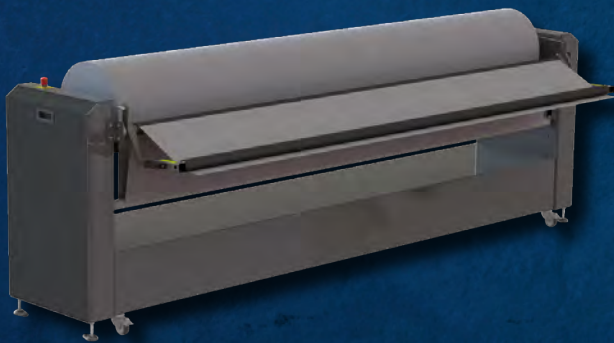
## MOTORIZED ROLL FEEDER

The Motorized Roll Feeder is a reliable solution designed to seamlessly integrate with cutting plotters or laser tables. It automatically adjusts material unwinding to match the needs of the connected machine, ensuring smooth and consistent feeding. With its user-friendly controls and sturdy construction, this feeder simplifies material handling and enhances workflow efficiency, making it an ideal choice for various production environments.



## TAKE UP UNIT

The Take Up Unit is designed for efficient and smooth media handling. Engineered with precision, this unit minimizes tension on media during the winding process, ensuring optimal performance. Its robust frame and advanced safety features, including emergency stop buttons, provide secure and reliable operation. The unit's Auto-grip shaft allows for easy media installation and adjustable winding speed, making it a versatile solution for various industrial applications. Ideal for consistent, high-quality output, the Take Up Unit is a trusted choice for professionals.



## AUTO SPLICING TURRET WINDER

Our Auto Splicing Turret Winder is designed to streamline your production process by enabling quick and efficient roll changes without stopping. It offers reliable performance with precise tension control, helping to reduce waste and improve overall productivity. Suitable for various industries like packaging, printing, and converting, this machine is built to meet your specific needs, ensuring a smoother and more efficient workflow. It's a practical solution for businesses looking to optimize their operations.

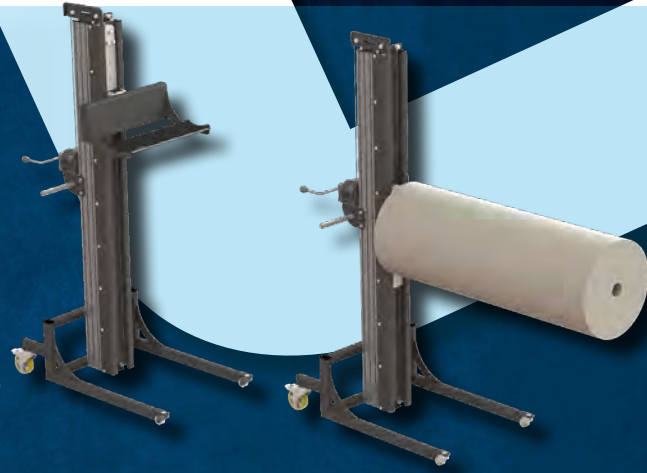




# OTHER machines

## ROLL LOADER

The Crest Roll Loader is designed to efficiently transport, load, and unload heavy rolls. Its low frame design and compact size allow it to fit through standard doorways and navigate tight spaces with ease. The machine is equipped with an automatic brake mechanism, ensuring safe and controlled operation. Its versatility includes easy swapping between scale and mandrel, making it adaptable for various tasks. The Roll Loader is ideal for environments that require frequent handling of large, heavy rolls with minimal physical strain.



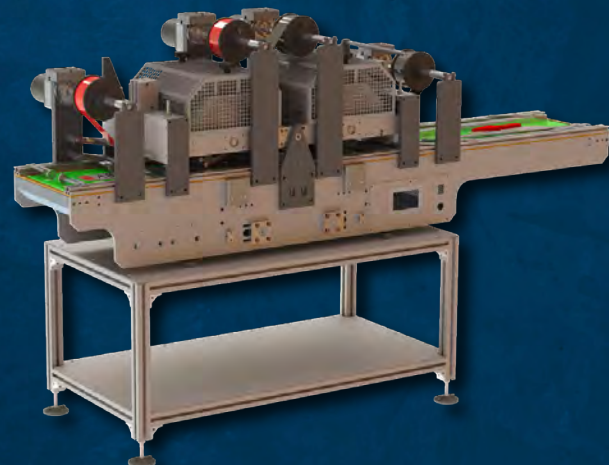
## WEB EMBOSSE

Redefining Precision for Medical Waste Packaging. Designed to master temperature dynamics and pressure calibration, our web embosser delivers flawless embossing, crucial for the production of highly accurate patterns on materials destined for vacuum-sealed medical waste bags. Additionally, and depending on the embossing pattern, it offers versatility for decorative applications or next-generation nanostructures, such as smart films. The machine can also be customized for other applications, such as perforation.



## HOT STAMPING MACHINE

The Hot Stamping Machine is designed for both stand-alone and automated production processes. It features adjustable rollers and customizable configurations, making it ideal for embossing, debossing, and multi-color hot stamping. With a user-friendly touchscreen, precise temperature controls, and adjustable belt speeds, it ensures high-quality results. The machine's adaptability, including options for multiple heated rollers and integration with external systems, sets it apart as a flexible solution for various stamping needs.





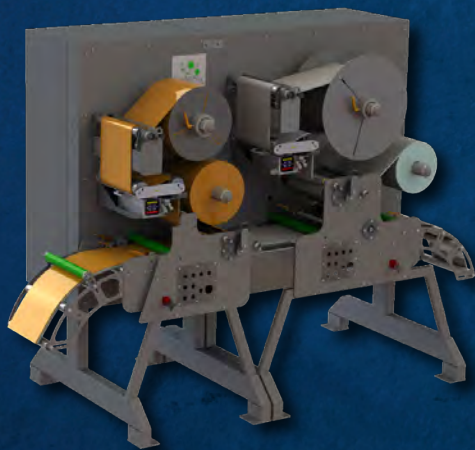
# LICENSE PLATE PRODUCTION LINE

## HOLOGRAM LASER MARKING UNIT

The standalone Hologram Laser Marking Unit with an integrated ink-jet printer is mainly designed for license plate production. It combines hologram stamping, laser marking, and inkjet printing capabilities, allowing it to apply security features like hologram logos, laser-etched registration numbers, graphics, and barcodes. What sets it apart is its modular design, enabling flexibility for different plate sizes and configurations. It operates fully automatically and can store and recall settings for various plate types, ensuring high-speed and accurate production.



## AUTOMATIC STRETCH LAMINATOR



This machine is a high-end, automatic laminator designed for license plate production. It features advanced stretch-control and feeding capabilities, ensuring precise lamination of reflective and non-reflective sheeting. Its key strengths include servo-controlled operations, automated buffer-loop management, and a central touch-screen interface for easy monitoring and adjustments. The machine is built with top-tier components for durability and low maintenance, making it ideal for high-volume, accurate production. It seamlessly integrates with other production line components, enhancing overall efficiency.

## LICENSE PLATE PRODUCTION LINE

A high-precision laminating machine line designed to produce reflective metal license plates. It begins by unwinding and flattening an Aluminum web, followed by applying a reflective film with perfect alignment using a Laminator. The Infeeder then positions the laminated strip for cutting, embossing, and shaping purposes, done by a Press. Optional units like the Punch, Heating, and Hologram Units enhance functionality, allowing for customization such as adding holes or holograms for functional or safety enhancements. The end product is durable, reflective license plates ready for the alphanumeric code being applied before being mounted on vehicles.



This is just a small selection from our extensive range of high-quality machines for license plate production.





## Crest Dutch Machinery

Schoenerstraat 3  
8102 GW Raalte  
The Netherlands

+31 (0)572 34 50 50  
[info@crest.nl](mailto:info@crest.nl)  
[www.crest.nl](http://www.crest.nl)

**CREST**  
DUTCH MACHINERY