

CRN53

Immersion Spot Nozzle

The rotary nozzle for pipes from 50mm and boreholes/recesses.

The CRN52 - the robust **powerhouse** with the highest cleaning performance in a compact design - more **sustainable** and less expensive than wet cleaning.

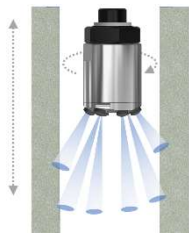
The rotating air nozzle creates a **pulsating and turbulent** air flow and optimizes the whirling up and detachment of the particles from the surface.

The previously patented automatic speed control guarantees a constant and pressure-independent speed, which ensures **process reliability** in automated operation.



Applications

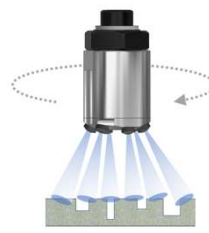
Concentrated cleaning of object surfaces



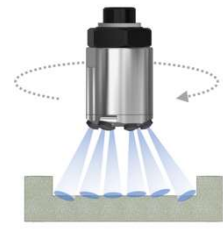
Cleaning of smaller blind holes



Cleaning of drill holes/recesses



Cleaning of grooves and crevices



Special Properties

To optimally adapt the nozzle to the cleaning problem, the design of the CRN53 offers several advantages.

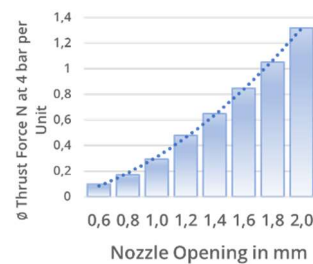
Effective angle 70° in 10° steps



Effective diameter \varnothing 65 mm @25 mm distance

Angle positions of the nozzle units

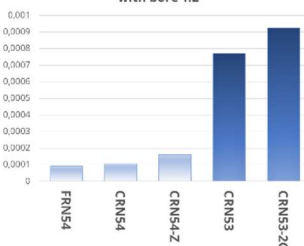
The nozzle units can be aimed to the **cleaning point** pairwise in 10° steps (each 10, 20 and 30°).



Size of the nozzle opening

To increase the **thrust force**, the openings of the nozzle units can be selected from 0.6 to 2.0 mm.

Effective force in N per mm² @25mm with bore 1.2



Concentration of thrust force to a small area

To increase the **effective force**, the openings of the nozzle units are focused on a smaller area, see effective force per mm² compared to other nozzle types in graph.

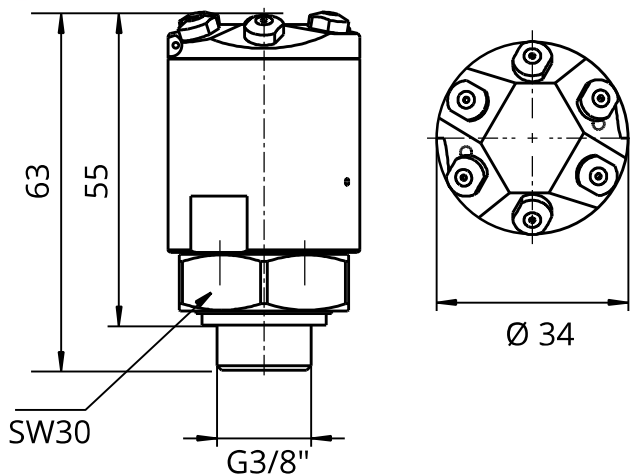


Additional nozzles in the center

To also reach axial problem areas such as boreholes, the upper part of the nozzle can be ordered with 2 additional **focused center nozzles** (0 and 8° inclined towards each other).

CRN53 Immersion Spot Nozzle - Datasheet

Dimensions



Variants/Order Info

CRN53-34	Base article code
Ex-CRN53-34	Variant for explosive areas Ex II 2G/D c II B T6
-2C-	With 2 centrum nozzles
-x.x-	Nozzle units (DE) with opening diameters x.x in mm (0.6, 0.8, 1.0, 1.2, 1.4, 1.6, 1.8, 2.0)
-G	Connection thread optional mit G: ¼ = 0,25 Zoll

Technical Specification

Operating range	15 - 50 mm, optimal 15-25 mm	
Effective diameter	Axial max ca.. 50mm @10mm, 100mm @50mm distance	
Nozzle numbers	2 x 3 max. at 10°, 20° and 30° airbeam angle	
Operating pressure	4 - 10 bar, recommended: 5 - 8 bar	
Compressed air requirement	oil-free, filtered: filter fineness < 20 m, at least class 2 ISO 8573-1:2010	
Connection	G3/8" with SW30	
Rotational speed	900 1/min +/- 8%	
Sound pressure	75 db(A)	
Lifetime of bearings	>10 years	
Weight	165g	
Material	Nozzle body:	Aluminium
	Nozzle Unitse:	Stainless steel
	Axle:	galvanised brass
Environment	0 - 60°C and < 80% rH (no dew)	

Scope of Delivery

- CRN53-34 rotary nozzle
- Nozzle units with diameter of your choice mounted in selected positions (Partial assembly of the 3 angle positions possible)
- Sealing ring 3/8" compressed air connection
- Mounting Instructions

Air Consumption

Air Consumption in l/min

mm	@5 bar		@8 bar	
	Std (6)	-2C- (8)	Std (6)	-2C- (8)
0.6	152	194	213	264
0.8	198	254	291	362
1.0	316	397	467	607
1.2	448	582	668	873
1.4	552	718	851	1111
1.6	707	934	1054	1433
1.8	846	1115	1254	1687
2.0	1046	1391	1631	2140

(more values on request)

Spare Parts

000 001 013-d	Nozzle unit with opening d=diameter 0.6-2.0 mm
000 102 013	Seal ring nozzle bearing
900 001 001	deep groove ball bearing
900 001 002	Locking ring

Accessories

899 001 035	Nozzle unit mounting tool
-------------	---------------------------